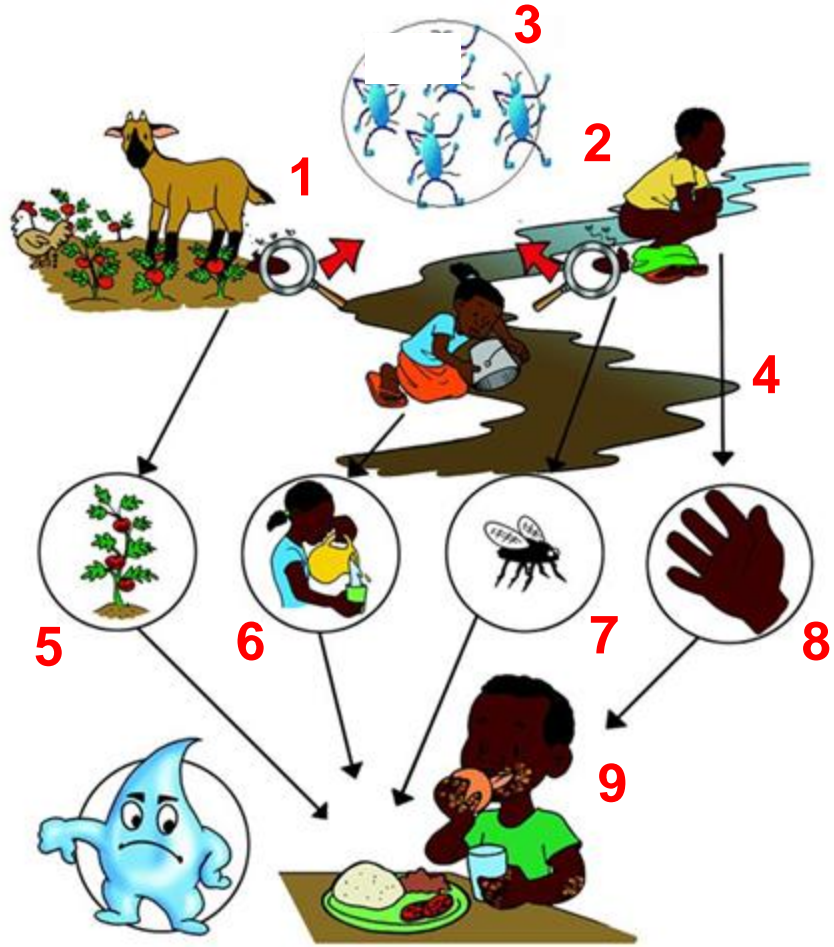


Water Missions International

Promotion Cycle 4: Healthy Sanitation Practices

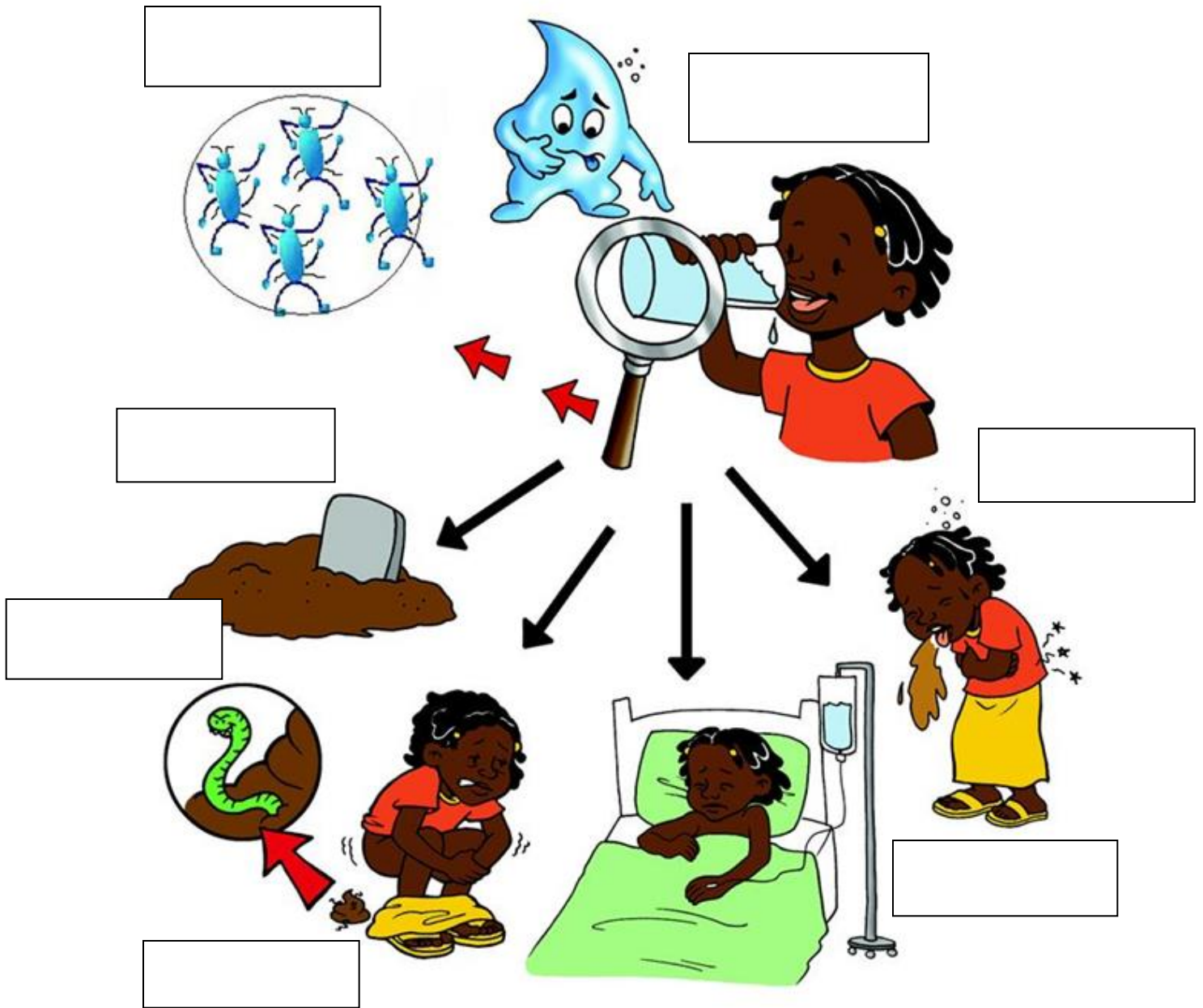




Les microbes viennent des excréments humains et animaux



1. _____
2. _____
3. _____
4. _____
5. _____
6. _____
7. _____
8. _____
9. _____



L'eau contaminée renferme des microbes
qui nous rendent malades

1. The key messages are (fill-in the blank):

- a. Contaminated water can contain _____ that are too small for human eyes to see.
- b. When microbes get in your mouth they can cause you to _____, go to the _____, have _____, and even _____.

2. Water that is clear, colorless and odorless is always safe to drink. (circle the correct answer)

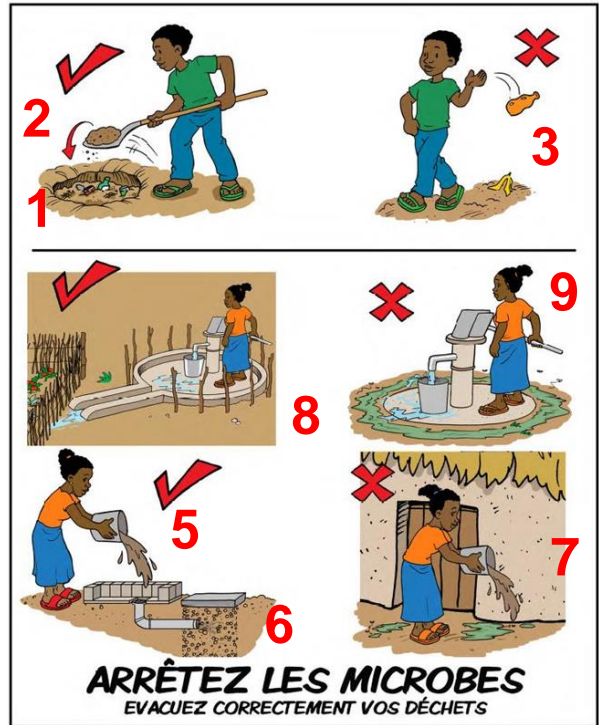
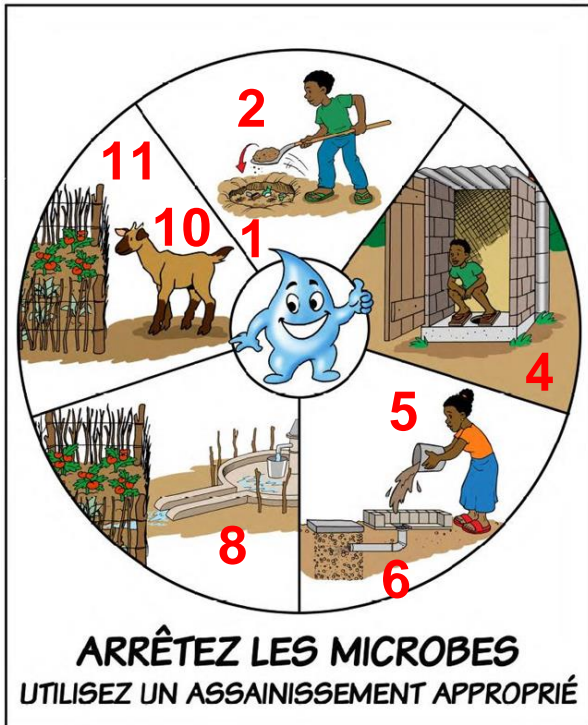
- A. Yes B. No

3. Feces from humans and animals contain microbes that can make you sick with diarrhea, intestinal worms, and other bacterial viral illnesses. (circle the correct answer)

- A. Yes B. No

4. How do we protect ourselves from becoming sick?

Notes:



1. _____
2. _____
3. _____
4. _____
5. _____
6. _____
7. _____
8. _____
9. _____
10. _____
11. _____

1. The key messages are (fill-in the blank):

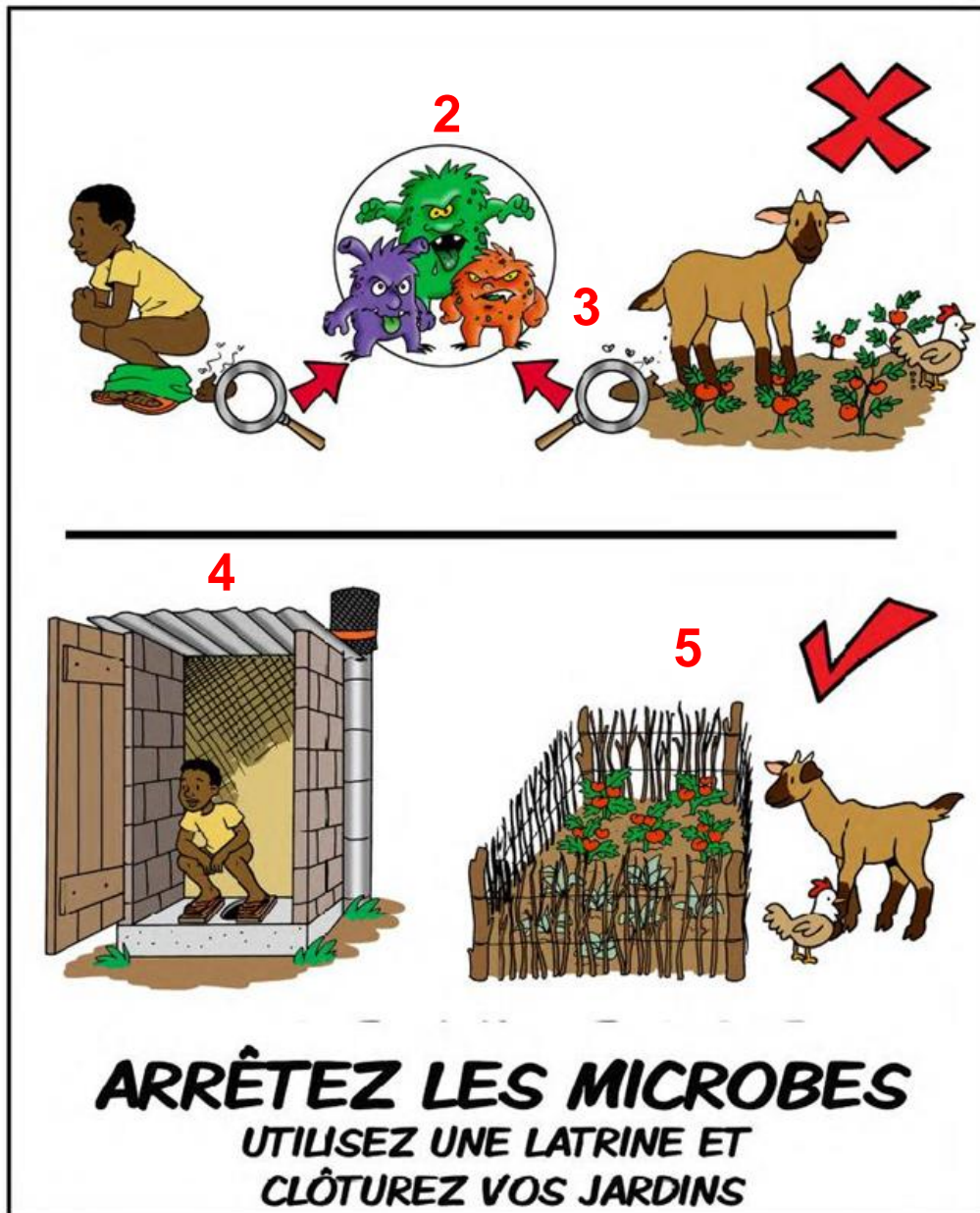
- a. As much as possible, use a _____
- b. Burn and bury all household _____
- c. Use _____ to keep animals out of gardens
- d. Use excess water for _____
- e. Pour used water in a _____

2. Which of the following sanitation practice is NOT appropriate?

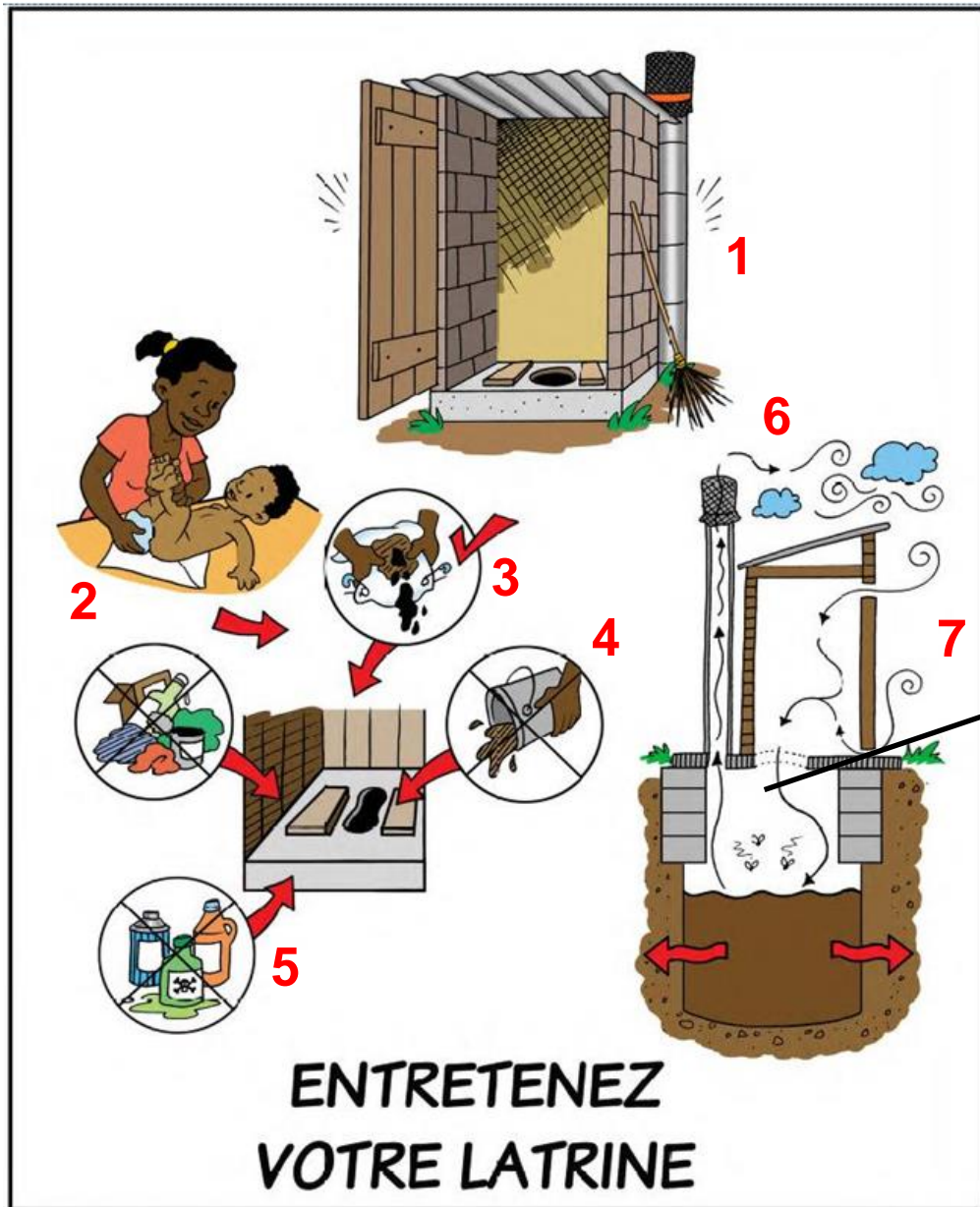
- a. Disposing of household trash and liquid waste in designated areas
- b. Using a latrine when urinating and defecating
- c. Disposing bath and dish water in the closest stream, river or lake
- d. Using fences to isolate gardens and crops from animals.

4. What is important to keep microbes away?

Notes:



1. _____
2. _____
3. _____
4. _____
5. _____



ENTRENEZ VOTRE LATRINE

1. _____
2. _____
3. _____
4. _____

5. _____
6. _____
7. _____
8. _____

1. The key messages are (fill-in the blank):

- a. Never place _____, _____, or _____ in your latrine
- b. Make sure that your latrine vent has a _____ to keep _____ from escaping the pit

2. What steps should you take in order to make sure your latrine is working to keep you and your community from getting sick? (circle the correct answer)

- a. Keep the latrine and surrounding area clean
- b. Do not put anything other than fecal material, anal cleansing material and urine in the pit
- c. Make sure that the vent is covered with a screen to keep flies from escaping
- d. Cover the squat hole after using the latrine to keep flies from escaping
- e. All of the above

3. What is important to keep the latrine clean?

Notes:
