

In case of emergency:Phone Instructions

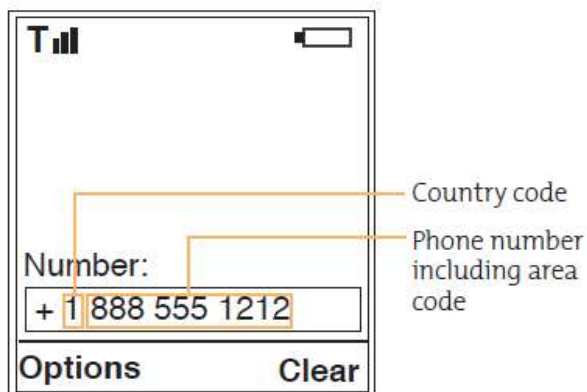
1. Find a clear place outside with a clear view of the sky, away from trees and tall buildings
2. Extend the antenna completely and rotate so that it points directly upwards when the phone is against your ear
3. Turn the phone on
4. Phone will display 'searching for network' and then 'Registered'
5. Continue to the "Phone call instructions" or "Modem Instructions" or "Text message (SMS) instructions"

Phone call instructions**Dial the Number**

As you enter a phone number, the digits will be displayed on a single line that will scroll across the display.

1. Enter the number using the key pad. As you begin entering digits, you will see **Options** displayed above the **left** soft key and **Clear** displayed above the **right** soft key.

The phone number must be entered in international format: : oo or + [country code] [phone number].



Note: All Iridium subscriber numbers begin with county code of **8816**.

Selecting a number

Call the first person on the list. If they do not pick up, leave a message and call the next person on the list. Continue through the list until you get a hold of someone.

George Greene IV	00-1-843-367-8998	ggreeneiv@watermissions.org
Pat Haughney	00-1-843-303-4927	phaughney@watermissions.org
George Greene III	00-1-843-697-8081	ggreeneiii@watermissions.org
Jerry Miner	00-1-843-670-7101	jminer@watermissions.org
Andre Mergenthaler	00-49-1709-0183-14	amergenthaler@watermissions.org
Brad Reed	00-1-843-697-1297	breed@watermissions.org



2. Press the **green** key.



Note: You will receive this message when the antenna is not fully extended from the handset.



3. **Calling** followed by the number you dialed appears in the display.

If the call does not connect, one of the following messages will appear.

Message	Directive
Busy Try Later Or Please Try Later	The phone is unable to access the network. Try again in a few minutes
Could not place call. No connection to the network	The phone is unable to access the network.
Restricted Area	The phone is unable to access the network. Move to an area where calls are allowed.



4. A timer will keep track of the duration of each call.

Note: If you have disabled the timer, **Connected** will display.

End a Call



1. Press the **red** key.

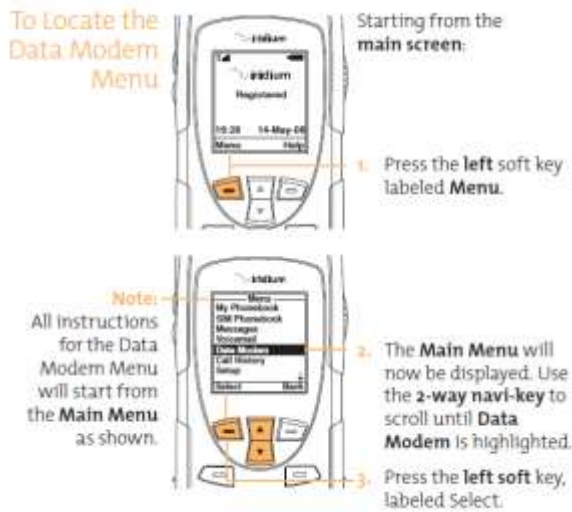
Re-dial Last Number Called



1. Press the **green** key twice.

Turn the phone off when you are done to extend the battery's charge.

Modem Instructions



9.1

Text message (SMS) Instructions

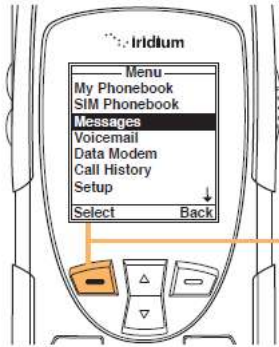
About SMS Messaging

How Your Phone Notifies You of Messages

If your phone is powered on, it notifies you of received messages in the following ways:

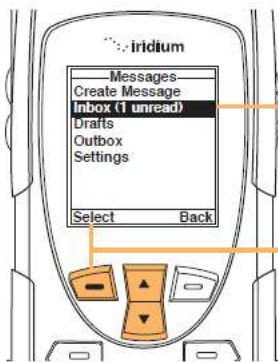
- An alert sounds and/or the phone vibrates.
- The message indicator is displayed
- The message **New SMS. Read Now?** is displayed.

Read a Message

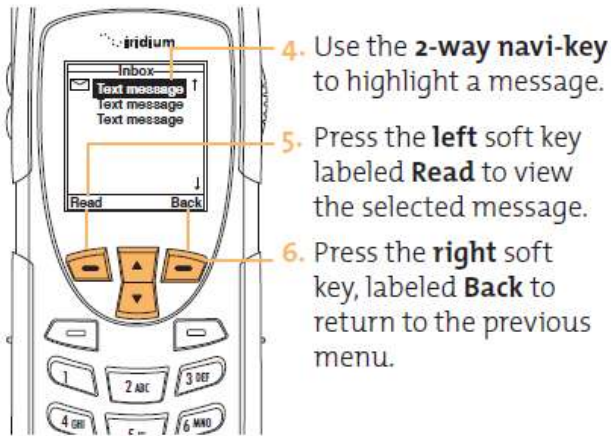


Start at the **Main Menu** with **Messages** highlighted:

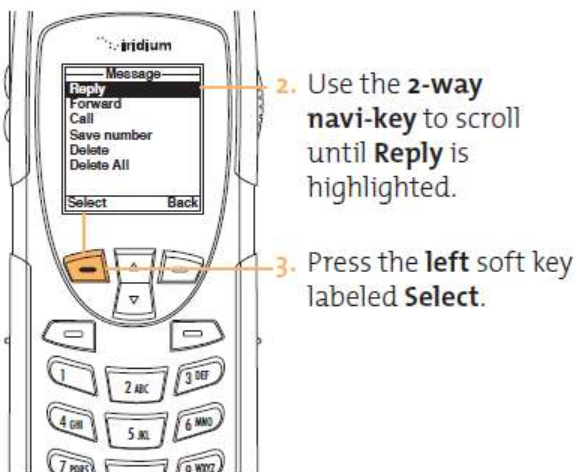
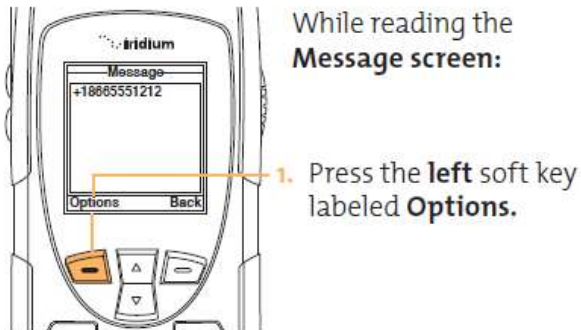
1. Press the **left soft key**, labeled **Select**.

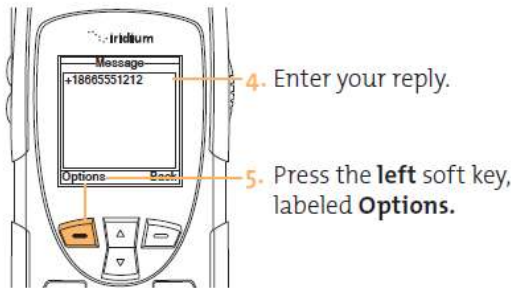


2. Use the **2-way navi-key** to scroll until **Inbox** is highlighted.
3. Press the **left soft key**, labeled **Select**.

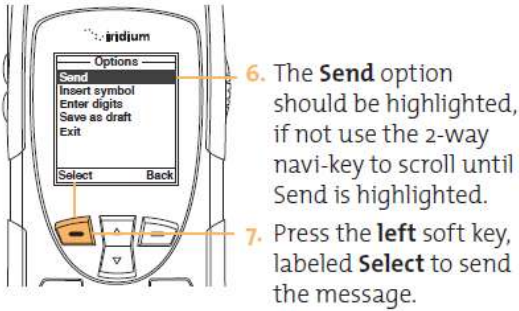


Reply to Sender





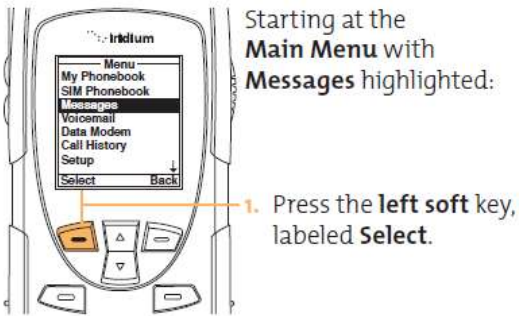
- 4. Enter your reply.
- 5. Press the **left** soft key, labeled **Options**.



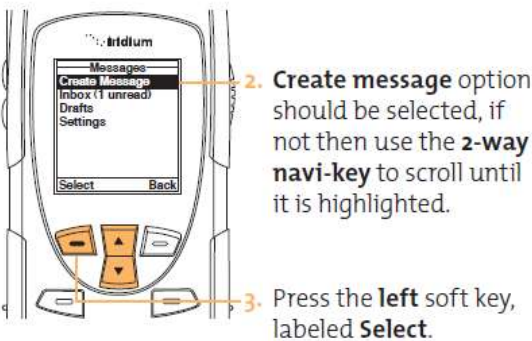
- 6. The **Send** option should be highlighted, if not use the 2-way navi-key to scroll until Send is highlighted.
- 7. Press the **left** soft key, labeled **Select** to send the message.

Note: If the sender's phone number is not part of your phonebook, select **New Recipient** to add the number.

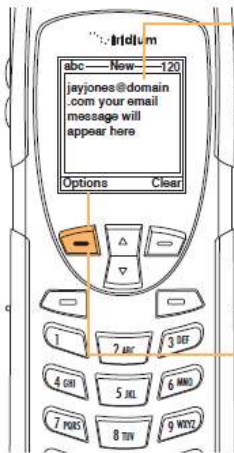
Create and Send a New Email Message to an address not in your phonebook



- Starting at the **Main Menu** with **Messages** highlighted:
- 1. Press the **left** soft key, labeled **Select**.



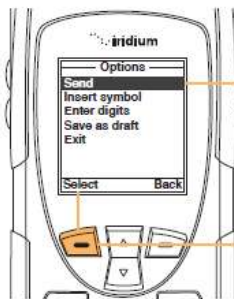
- 2. **Create message** option should be selected, if not then use the **2-way navi-key** to scroll until it is highlighted.
- 3. Press the **left** soft key, labeled **Select**.



4. Enter your message.

Note: You must begin your text message with the recipients email address, leaving a space between the email address and the beginning of your message.

When your message is complete, press the **left** soft key, labeled **Options**.



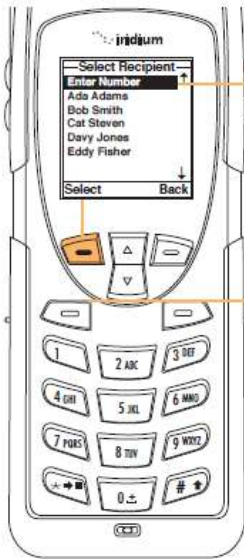
5. The **Send** option should be highlighted, if not use the 2-way navi-key to scroll until it is highlighted.

6. Press the **left** soft key, labeled **Select** to send the message.



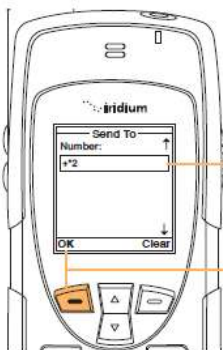
7. A **Send To** screen will now appear.

8. Press the **right** soft key, labeled **Add**.



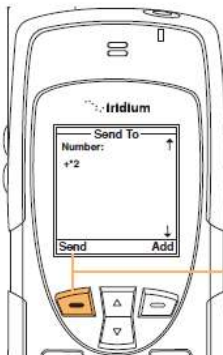
9. The Enter Number option should be highlighted, if not use the 2-way navi-key to scroll until it is highlighted.

10. Press the left soft key labeled Select.



11. In the Number field, after the prefix of 00 or +, enter *2.

12. Press the left soft key labeled OK.



13. Press the left soft key labeled Send to send the message.

Storage directions

Store (in its pelican case) in a place where it could be accessed if the building were to collapse.

Charge capacity

Standby Time (when on): Up to **30 hours**

Talk time: Up to **4 hours**

Plug in the phone monthly to make sure battery is always charged.

Testing

Call another phone to test the SAT phone every 2 months.